



WALLINGFORD PRESBYTERIAN CHURCH

Annual Report 2018

Mission Statement

With grateful recognition that Jesus Christ is Lord of the church and of our lives, the mission of the people of Wallingford Presbyterian Church is to witness to Christ's presence and power.

We recognize that we have been transformed, yet are always being transformed into the likeness of Christ through the power of the Holy Spirit.

We witness through meaningful worship, Christian nurture, spiritual growth, caring service, fellowship, music, and mission in the broader community.

In faithful response to God's call, we remain open to the work of the Holy Spirit so that we continually are shaped as individuals and as the body of Christ.

.... God's growing people serving Christ in a changing world

WALLINGFORD PRESBYTERIAN CHURCH
Wallingford, Pennsylvania
January 27, 2019

Agenda for the Annual Meeting of the Congregation and Corporation

Call to Order

Welcome

Approval of the minutes of January 29, 2017 Annual Meeting
(Pages 32-34)

Review of our work, mission and ministry

Pastor's Remarks (6)

Associate Pastor's Remarks (7)

Review Reports from Councils, Committees and Organizations

Nominating Committee (11)

Personnel (11)

Worship (12)

Music (13-14)

Education (14)

Youth and Children's Ministry (15-18)

Deacons (19)

Stephen Ministry (20)

Connections (20)

Strawberry Festival Committee (21)

Congregational Wellness Ministry (21)

Writing Out Loud (22)

Adult Bible Study (22)

Mission and Service
Committee (23)

Peacemaking and Social Justice
Committee (24)

Fellowship of Friends (24)

Women of Wallingford (25)

Stewardship Council (26-27)

Memorial Committee (27)

Wallingford Cooperative
Nursery School (29)

TCDN After School (30)

Boy Scouts (31)

Nominating Committee Report – **Elder Helen Picher**

Election of Committee Members at Large

1. Sandi Fleisher

2. Joyce Jefferis

3. Frank Noyes

4. Earl Varney

5. Colleen Zeszut

Alternate 1. Roger Demos

Call for the Meeting of the Corporation – **Trustee Bob Gerlach**

Certification of Quorum

Call for New Business

Board of Trustees Report (27)

Record of Financial Review (35)

Reconvene the Meeting of the Congregation

New Business

Treasurer's Report for 2017 (35-36)

2017 Financial Review (37-42)

Benevolence Report (43-44)

Review of the 2018 Budget Approved by the Session

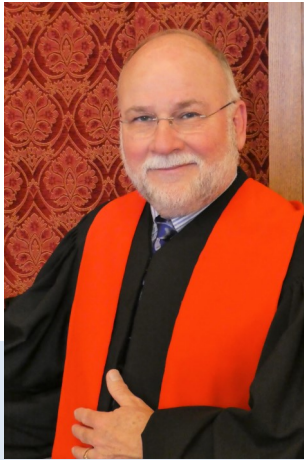
Review and Approval of Pastoral Terms of Call – **Elder Frank Noyes**

Closing Prayer, Grace and Benediction

TABLE OF CONTENTS

Agenda	2-3	Stewardship	26-27
Table of Contents.....	4	Memorial Committee	27
Staff.....	5	Trustees	28
Officers.....	6	Wallingford Cooperative Nursery School .	29
From the Pastor	7-8	Wallingford After School Club	30
From the Associate Pastor	9	Boy Scouts Troop 277	31
Report From the Clerk of Session	10	Annual Meeting Minutes 2018	32-33
Statistical Report	10	Vision 250.....	34
Nominating Committee	11	Treasurer’s Report	35
Personnel Committee.....	11	2019 Budget	36-38
Worship Council	12	Analysis of Budget Change.....	38-39
Music Ministry.....	13-14	Balance Sheet	39-41
Education Council.....	14	Benevolence	41-43
Youth Ministry	15-17	Simplified Budget Summary.....	43
Sprouts.....	18		
Deacons.....	19		
Stephen Ministry	20		
Connections	20		
Strawberry Festival.....	21		
Congregational Wellness Ministry	21		
Writing Out Loud.....	22		
Adult Bible Study.....	22		
Mission and Service Committee	23		
Peacemaking and Social Justice	24		
Fellowship of Friends.....	24		
Women of Wallingford	25		

STAFF



Rev. François Lacroix
Pastor



Rev. Taylor Cornelius
Associate Pastor



Liz Braden
Director of Music



Kate Callahan
Church Administrator



Georgie Perullo
WCNS Director



Leslie Krowchenko
Communications
Coordinator



Michelle Hall
Financial Secretary



Zoe Andrews
Youth Ministry
Assistant

CHURCH OFFICERS

SESSION

Class of 2019

Rachel Lindeman
Jennifer Miller
Jean Stromberg
Patricia Tillson
Gail Weaver

Class of 2020

Teresa Ahern Sawyer
Chris Dearnaley
Mary Payne
David Shipman

Class of 2021

Christine Darr
Lin Floyd
Leslie Krowchenko
Mike Meloy

BOARD OF DEACONS

Class of 2019

Kristen Childers
Cyndi Lacroix
Cathy Kilpatrick
Diane Nixon
David Rudd

Class of 2020

Joanne Callahan
Barbara Demos
Polly Sacco Ezzell
Kai Yokoyama

Class of 2021

Mary Lou Day
Mimi Haggerty
Rosanna Denney
June Tolomeo
Carol Dotts

BOARD OF TRUSTEES

Class of 2019

Corey Benham
Bob Gerlach
Bob Foley
Pat Utzinger

Class of 2020

Katherine Switala
Dan Glenn
Tom Haley
David McCullough

Class of 2021

Ken Ezzell
Charlie Hammes
Walt Kaminski
Kevin Montague



Clerk of Session

Judy Kenworthy

Treasurer

Andy Yost

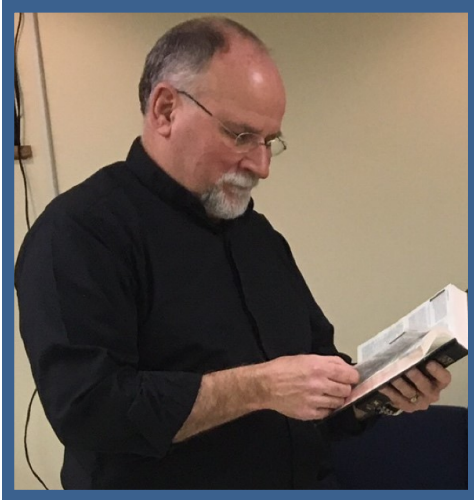
President of Trustees

Bob Gerlach

Moderator of Deacons

David Rudd

From the Pastor



Dear WPC Members and Friends,

Muriel Ruckeyser, American poet, once wrote that the universe is made up of stories, not atoms.

Frederick Buechner writes of story, “It is well to remember because it keeps our eyes on the central fact that the Christian faith *always* has to do with flesh and blood, time and space, more specifically with your flesh and blood and mine, with the time and space that day by day we are all of us involved with... in other words, the truth that Christianity claims to be true is ultimately to be found, if it is to be found at all, not in the bible, or the church, or theology – the best they can do is point to the truth – but in our own stories... It is absolutely crucial therefore, to keep in constant touch with what is going on in your own life’s story and to pay close attention to what is going on in the stories of others’ lives. If God is present anywhere, it is in those stories that God is present. If God is not present in those stories, then they are scarcely worth telling.”

In a way what you hold in your hands is the story of this church over the past year, our story as we walked the journey of faith together. The way we have worshiped and prayed and played together expressing the Good News we received through Jesus Christ. The way we have tried to express the love and grace of God to others through mission and ministry.



This year our story was expressed through your generous support of Vision 250 projects, as well as the support we continue to give to missionaries near and far. Our story was expressed through Sprouts gatherings and mission trips with our High Schoolers and as our Middle and High Schoolers gather every week to share a meal and learn about what it means to live a life of faith. We sang our story at worship and special concerts.

Our faith story is made up of nuts and bolts and money and hopes and dreams for the future and it is populated by you. Thank you for being a part of God’s story as it is fleshed out here at Wallingford Presbyterian Church. Thank you for your support, your gift of time and talent and money and resources. Most of all thank you for you and the sharing of your story with this community of faith in Jesus Christ.

Continued on Next Page

Some highlights for me in no particular order are:

- A very successful Vision 250 campaign
- The launch of the new website
- Legacy Fund projects
- The installation of the new sound system
- Kate Callahan coming on board as our full time church administrator and bringing the church office into the 21st century
- The Strawberry Festival
- The Messiah Sing
- The joint choir concert with Swarthmore Presbyterian church and a new commitment to work more cooperatively with one another
- Hosting the Presbytery of Philadelphia
- Vacation Bible Camp
- The Christmas Pageant
- Continued focus on creating mission opportunities
- Being 'home' for so many organizations in our community
- The High School mission trip to West Virginia,
- Pastor Taylor's wedding
- The Advent Festival
- Our Christmas Eve services
- The creation of new programs, including

Wednesdays at Wallingford

- The new pictorial directory
- Holy Week and Easter Services

-- and last but not least when we gathered to install Pastor Taylor with no heat or electricity in the church.

I look forward to the coming year and the privilege to share my story with you and I look forward to the stories we will create together because of God's grace, love and blessings.



From the Associate Pastor

As I enter into my second year serving as Associate Pastor of Wallingford Pres, I am once again so filled with gratitude for the opportunity to work alongside such dedicated and passionate Christian brothers and sisters as we have in our congregation as we strive to seek first the Kingdom of God and its righteousness. It is a joy to continue to grow with the Spirit's leading as we envision together the future of our congregation and the possibilities for ministry, mission, and service.

My favorite memories from the past year have been:

*Leading Vacation Bible Camp and watching our church's children sing and dance with the joy of the Lord.

*Praying with the children at Sprouts and hearing their earnest and honest prayer requests.

*Getting to know congregants better through conversations during pastoral visits.

*The candlelight service on Christmas Eve and seeing the spirit of Christmas fully present.

*Singing hymns with the congregation and the children during the Advent Festival.

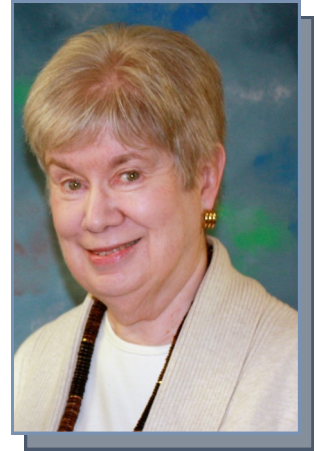
*Leading worship at the Sunrise Service on Easter and praising God as the sun came up.

*Experiencing the Strawberry Festival for the first time – what a thing to behold!



2018 Report of the Clerk of Session

It is the Clerk's responsibility to maintain records of the church: minutes of Session (made up of elders) and Congregational meetings, new members, transfers to other churches, deaths, baptisms and marriages. In addition, there are statistical reports required by Presbytery and General Assembly of our denomination. During 2018, our records were reviewed and approved by the Presbytery.



Our church is permitted to send four elders (commissioners) to Presbytery meetings. Those four are the only people who can vote representing our church, in addition to the Pastor and Associate Pastor.

Annual Statistical Report for Wallingford Presbyterian Church for the Year Ended December 31, 2018

Members on January 1, 2018

385

Gains:

Profession of Faith 17 and under	3
Profession of Faith 18 and over	1
Reaffirmation of Faith	5
Certificate Gains	7
Other Gains	0
<u>Total Gains</u>	<u>16</u>

Losses:

Certificate Losses	1
Deaths	2
<u>Total Losses</u>	<u>3</u>

Members on December 31, 2018

398

Infant Baptisms	3
Adult Baptisms	0
<u>Total Baptisms</u>	<u>3</u>



Nominating Committee

The 2018 Nominating Committee was elected at the 2018 Annual Meeting for the second time to work under the new schedule of doing the nominating process from January to the spring. New church officers begin their 3-year terms in September—the beginning of the program year, rather than the beginning of the calendar year. The process worked well and in 2018 we were able to fill all the positions in a

timely manner. The Nominating Committee strives to develop a slate of committed, faithful members that includes a range of ages and long-term and newer members.

The new officers were elected to serve by the Congregation on Rally Sunday 2018. The Nominating Committee will nominate the 2019 Nominating Committee to be elected at the Annual Meeting, and that committee will present the next slate of officers later in the year. With appreciation to the committee members: Sallie Anderson, Barbara Demos, Jerry Rafter, Dottie Celebre, Rick Miller, Jenny Montague and Jeni Albany.

Respectfully submitted,
Helen Picher and Pat Tillson
Committee Co-chairs

Personnel Committee

The Personnel Committee continued its work on behalf of the congregation by reviewing personnel policies, making recommendations to the session regarding staff salaries and keeping up to date with state and federal employment requirements.

The major change in staffing this year was moving back to a full time Church Administrator when Pat Kelly retired and Kate Callahan, who had been job-sharing with Pat, was hired to work full-time. Kate brings a certain tech savvy which has enhanced office productivity. Committee members in 2018 included Dan Glenn, Frank Noyes, Helen Picher, and Penny Sass.



Worship Council

The Worship Council continued its tradition of working hard on both the mundane and the spiritual. The Council ensures that the Sanctuary is prepared for the holidays and all of the worship services year-round, by decorating, refilling the candles, pews, and visitor pads, changing the paraments, scheduling ushers and liturgists and more. The Council prepares the Communion feast and carefully cleans and stores the supplies afterward. These are the “mundane” acts of love and service by the Council and others who work with the council.



Like Pastor François and Pastor Taylor, the Council would like to see more diversity in those participating in services (for example, more children, youth, and members who we don't often see and hear from) and continuity in the strong role of music in our worship.



The Council also recognizes that not everyone “grew up” in the church and may not know all the terms, history and meanings. This is why we started the “Did you Know?” items you often see in the weekly Bulletins. If you ever have a topic you want covered – the answer to some question you have always wondered about – let us know. Chances are others have wondered about it as well!

The Worship Council also works on spiritual side of things and has a goal to do more of this good work in 2019. The Council looks at the spiritual calendar and worship planning of Pastor François and Pastor Taylor to help support and collaborate in making the worship of our Community of Faith be the best it can be. Occasionally, the Council will take on planning a worship service, as we did for the Mothers' Day “Gift of Women” Service in 2018.



Music Ministry



In 2018, the Music Ministry continued to work hard to provide music at our weekly worship services as well as special events throughout the year. It is a joy to work alongside such dedicated people, who are willing to give their time, their voices, their talents, and their hearts in the service of the music. In 2018 we began a collaboration with Swarthmore Presbyterian Church and their Music Director (former WPC member) Meghan Meloy Ness. We collaborated on one of the best concerts we have ever presented, which featured Leonard Bernstein's *Chichester Psalms* and a musical setting of Barrie Shepherd's poem *Cadenza*. We sang to a packed house that day and continued to build our musical community by bringing together the choirs from both churches.

We continued our tradition of offering Taizé Services, this year focusing on services in Lent (the Service of Wholeness and Healing) and Advent (Blue Christmas Service). These services are supported by many volunteers in the Music Ministry, and continue to offer a time of quiet reflection, music, and prayer.



A highlight of every year is our Annual Messiah Sing, and this year was no exception. The WPC Chancel Choir performed alongside several guest soloists (including Kara Mulder, who we have been blessed to have with us as a staff singer for most of 2018!) and organist Jeffrey DeVault to a full house of appreciative listeners and singers; it was a great way to usher in the Christmas season. Later in December, the children and youth of the church presented an adaption of 'The Backwards Christmas Pageant' as part of Sunday morning worship on December 23. Through word, song, costumes, and laughter these young people helped remind us of the Christmas Story.



Later in the year we collaborated again on a Coffee House at Swarthmore Pres, where folks from both churches gathered together to share song, food, and fellowship.



The year ended with what is one of our most beautiful worship services, the 11:00 PM Candlelight Service where the Chancel Choir offered some lovely anthems to add to our worship.

It has been my absolute privilege to make music with the many dedicated choir members, bell choir members, and soloists throughout the year, and I am thankful for all those who give their time and talents to continue the work of the Music Ministry.



Education Council

The WPC Education Council has completed another successful year of providing Christian Education for children of all ages, varied Adult Education opportunities to members of the congregation and the community plus continued activities for Middle and High School students. In addition, Education Council provides community activities through our Sprouts and Saturday morning programs open to members and the community at large with a focus on young children and their families. Our Summer Vacation Bible Camp continues to be a community favorite. Thirty-plus children participated in this event in 2018.

Education Council has worked in conjunction with WPC Connections to bring our Annual Eggstravaganza and Trunk or Treat events to our members and the community. We also worked with Mission and Services to promote and execute a coat/jacket clothing drive in the

Fall of 2018. We collected over 100 coats/jackets which were donated to Chester Eastside.

Our Annual Advent Festival in December continues to be a special time for children, youth and parents. The sheep were here as Pastor Taylor told the Christmas story; Advent crafts were made and greens were available for families to make their own Advent Wreath for their home. The evening ended with yummy food and desserts followed by a community carol sing to welcome in the Advent Season.

Thanks to the many volunteers at WPC who make the activities of Education Council possible. The Council members are Mina Varney, Pam Mattote, Sally Flemer, Bob Kenworthy, Colleen Zeszut, Shirley Rudd, Jean Stromberg, Gail Weaver, Roger Demos, and our pastoral advisor, Rev. Taylor Cornelius.

Youth Ministry Report

Youth Ministry has several purposes:

1. To follow the model of Christ's ministry by meeting youth where they are in their own lives and own faith journeys, and to come alongside them as they navigate the difficult waters of adolescence.
2. To provide youth with opportunities to serve others through mission and works of love.
3. To connect to the larger community of faith within the church and participate in intergenerational ministry.
4. To connect to one another in positive and faith-filled ways to establish Christian community and friendship not only with students their age, but of all ages.



5. To educate youth in Bible, theology, and practice so as to learn – but also use – the many lessons we are taught by Christ.

6. To encourage faith and trust in God and to help students to build relationship with God.

How to Get Involved:

There are many ways to help and give back to this next generation of Christians, and here are ways to do just that!

- * Cook dinner for our youth group (Sign up sheet in Fellowship Hall)
- * Drive for one of our larger events
- * Help lead the summer mission trip
- * Become a mentor for Confirmation
- * Come for "Grandparents Day" at youth group
- * Volunteer as a chaperone/helper for a youth group night



Youth Group

Our youth meet weekly for a time of fun, faith, learning, and friendship. Every Wednesday night from 6pm-8pm we meet with students in grades 6-12 to share a meal together, discuss how our weeks went and have a chance to reconnect, play games together, and discuss a faith-related topic before we end in prayer. This year we also made an exciting addition to our youth team by hiring a recent youth group graduate, Zoe Andrews, to be our Youth Ministry Assistant.

Some highlights from this year include:

*Taking the high school youth to West Virginia for a mission trip full of meaningful work and group bonding.



*Having our Halloween party when everyone dressed up, and we played games and made a real mess!

*Hiring Zoe Andrews to be a part of our leadership team.

*Confirmation Sunday when we had a great group of high school students become members of our church.

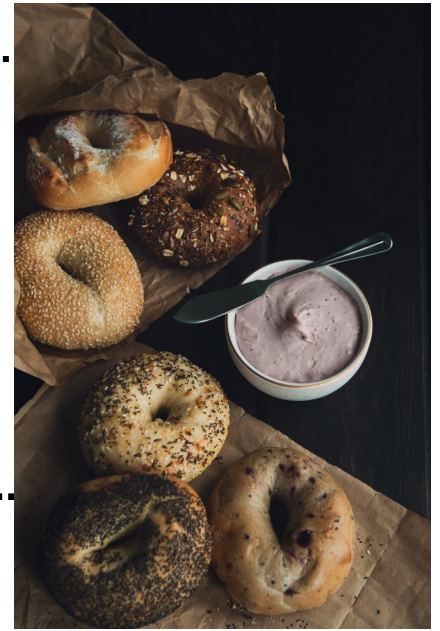
*Visiting Bryn Mawr Presbyterian Church and playing a church-wide game of Sardines (a hide-and-seek-like game) with the youth of Bryn Mawr.

*Having our youth participate in Rise Against Hunger and even join in on the dancing as they worked!

Special thanks to Zoe Andrews and Pastor François for their support of the program through supervision and leadership. Additional thanks to our "Grandparents" who came on Grandparents Day, and the many parents and congregants who cooked and brought dinner for us for our youth group nights!

Breakfast Club

Breakfast club meets on Sunday mornings, twice a month to learn about the Bible through lessons, conversations, games, activities, prayer, and meditation. On the 2nd and 4th Sundays of the month, the students meet in the youth room to gather for breakfast and their lesson. Special thanks to our Breakfast Club leaders from this past year: Tom Erickson, Denine Gorniak, Jeni Albany, and Holly Renegar.



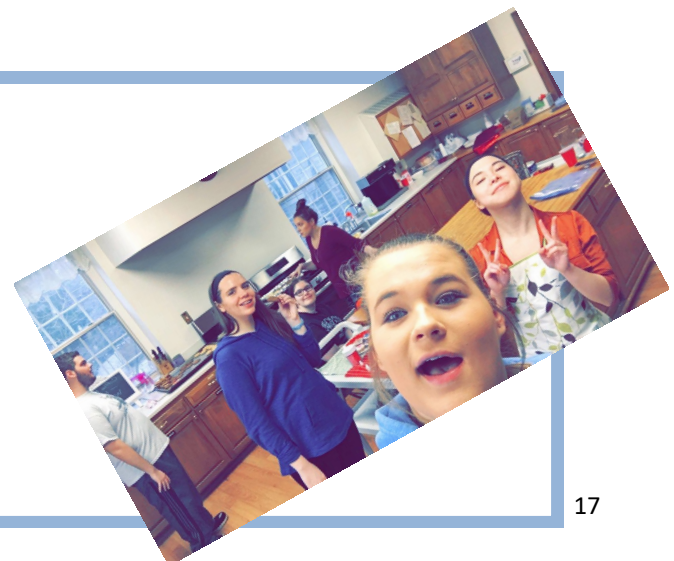
Confirmation

On May 6, 2018 we had the pleasure of welcoming four new young people to officially be a part of our church family! Our confirmation students, Eva Switala, Yvonne Yokoyama, Miles Koziol, and Maddie Johnston, completed the Confirmation Class of 2017-2018 and became members of Wallingford Presbyterian Church. Their year of learning was full of great discussions, lessons, mentorship, and a retreat as well. Many thanks to the mentors of our confirmands, David Rudd, Jeni Albany, Lise Meloy, and Meghan Hawkins for their meaningful support of our students.



Young Adult Program

In 2018 Pastor Taylor began a Young Adult Program for the church. The program is offered for college-age young adults and meets monthly. The group does different events centered around recreation, bonding, and discussion of faith topics. In 2019 the group plans on events such as bowling, documentary and discussion, Hershey Park, and more!





SPROUTS

What is Sprouts?

Sprouts is a fellowship and educational group for K-5th graders. Sprouts meets on the 1st Friday night of the month for 2 hours. Each meeting focuses on a different educational, fun, or service related activities. After dinner together, kids engage with the evening's lesson through listening and through playing. Pastor Taylor and Meghan Hawkins lead Sprouts with special thanks to Sally Flemer, Zoe Andrews, Noel Petherbridge, and Sarah Hammes for helping with the children, as well as many thanks to the parents who volunteered to provide dinner.

What are the Sprouts doing this year?

Friday, September 14th, 2018 from 6pm – 8pm : Bowling at Sproul Lanes

Friday, October 5th, 2018 from 6pm – 8pm : Blessing of the Animals!

Friday, November 2nd, 2018 from 6pm – 8pm : Thankfulness and Giving

Friday, January 4th, 2019 from 6pm – 8pm : Team-Building Game Night!

Friday, February 1st, 2019 from 6pm – 8pm : Experiencing Prayer

Friday, March 1st, 2019 from 6pm – 8pm : The Bible: What is This Thing?

Friday, April 5th, 2019 from 6pm – 8pm : Science Night: Experiments Galore!

Friday, May 3rd, 2019 from 6pm – 8pm : End of the Year BBQ!



Annual Report of the Board of Deacons Calendar Year, 2018 David V. Rudd, Moderator for 2018-2019

The Board of Deacons meets on the third Tuesday of the month to review the work of the eight action ministries we support. Each Deacon is assigned a Care Network of between 15 and 20 member and friend households. This is the point of contact for those with joys to share or concerns that need addressing.

Twice a year, the Blood Drive team organizes the Deacons to call potential donors to support a one-day event that traditionally has generated between 50 and 55 units of blood, each of which could impact as many as three lives. This ministry has been in place for 70 years.

Deacon Helpers field requests from member, other Deacons, and call-Ins for assistance with transportation needs, home repairs, or a warm meal help among many other services. We call on a number of members who have agreed to offer their services.

The General Missions team handles emergency calls involving members, friends, or the public who are in need of immediate assistance. The main focus is to guide them to the resources they need to meet their challenges.

The General Missions – Food Ministry group has led the way as we shift from providing “Holiday Baskets” twice each year to providing selected gift cards that give more flexibility in filling

individuals’ specific needs. This group also oversees the Pantry Brigade collection and delivery and is working on other avenues for our church to provide support to those living in food deserts or experiencing food insecurity.



The Giving Tree team plans and executes our annual gathering of Christmas gifts for children served by Chester Eastside, Cityteam, and The Village, as well as specific families in need identified through other channels. This year, in addition to collecting and delivering more than 200 gifts, the congregation donated 238 pair of socks, which are the most requested item by those struggling with homelessness.

In addition to the work individual Deacons do with their Care Networks, pairs of Deacons take the sanctuary flowers each Sunday and deliver them, along with a short visit and a “we are thinking of you and praying for you” card to individuals, families, and caregivers experiencing immediate joys, sorrows, or difficulties.

While the Deacons are the visible part of this caregiving, you, the congregation are the well from which we draw again and again.





Christ caring for people through people

STEPHEN MINISTRY

Stephen Ministry is a complete system of training and organizing lay persons for caring ministry in and around their con-

gregations. Stephen Ministers provide distinctively Christian care to those among us who are experiencing a time in their lives when they need to have a committed Christian friend journey with them for awhile. WPC has been enrolled as a Stephen Series congregation since 1997. In 2018, we continued to provide this care to all in our congregation and community who requested it from us. To facilitate this ministry, we also joined with the Stephen Ministry programs of Swarthmore Presbyterian Church and Trinity Episcopal Church so that the broader Wallingford – Swarthmore community can be better served. A combined training class for new Stephen Ministers will begin on January 23, 2019.

While the confidential nature of what we do prevents us from sharing the details of any of our relationships and makes providing photos difficult, this ministry is deeply fulfilling to those providing care as well as to the care receivers. Over the 20 years that we have been enrolled in Stephen Ministry, scores of care receivers have been helped, and over 30 WPC members have been involved in providing care. The currently serving WPC Stephen Leaders are Roger Demos, Russ Kinder, and Bob Kenworthy.

WPC Connections

WPC Connections' activities are aimed at almost everything from getting people in the community to visit and connect with us, to getting current members to connect more closely with each other. A list of 2018 activities included the following: Easter Egg-stravaganza, Trunk or Treat, Mid-Winter Dinner, the Rally Day (food truck) picnic, PrimeTime luncheons, Kids Play Group, Adult Social outings, Welcome Bags for visitors, and small group outings. Currently, there are two small groups active, but there is always room for more to get involved. One group likes to tour local sites (Longwood Christmas and summer fountain display, A Christmas Story, Mercer Museum, Chanticleer Gardens) and one is made up of people who normally eat alone.



Strawberry Festival

The 2018 Strawberry Festival was held on Monday, June 4. The weather was warm and clear and many members and neighbors attended. As in the past, WPC offered food, games, attic treasures, books, music, and strawberries in many forms. All of these were presented in a spirit of fellowship. The Strawberry Festival serves as an outreach to our community and as a support to designated missions.



Each year, the Mission and Service Committee selects specific groups to benefit from the proceeds and the choice is then approved by Session. This year, our net proceeds exceeded \$7,000, which was donated to Chester Eastside for children's summer programs.

Congregational Wellness Ministry

The Congregational Wellness Ministry continues to be a quiet outreach of WPC. Without a lot of fanfare, the CWM serves members and friends in many capacities over the course of the year. Being next door to the church makes the accessibility of a nurse very beneficial for the program as it relates to youth group members needing ice on staved fingers, bruised elbows and wounds requiring a bandaid and a "kiss to make it better". Being able to attend to weary strangers who have shown up in our parking lot in medical distress and seeking the appropriate response at the moment has been an extension of what WPC is about to the community at large.

I continued visits to Skilled Nursing Facilities and doctors offices to be the extra pair of ears, phone calls and notes and private listening time (ah those ears again), monthly teleconferences with the LCMS, a Parish Nurse lecture series that I really enjoy.

I am in Continuing Education classes in a variety of disciplines that I feel will best serve in this ministry and to renew my Pennsylvania State Nursing License, along with CPR, all of which have been time sensitive and important to me and to the ministry of CWM at WPC. I am blessed to be able to continue this ministry no matter how quiet it appears.

Joyfully Submitted,
Cyndi Lacroix, RN, CWM

Writing Out Loud

Writing Out Loud was new offering this year. We meet on the second and fourth Thursday each month at 10:30 am in the church library. It has been a small group who come together consistently to share their thoughts and their gifts (or the lack thereof) with pen and paper or quilting squares or anyway they wish to open themselves up. We invite anyone who wishes to participate to join us. It is a safe space to put down on paper what you otherwise would not say about life and feelings or, going places in story telling you might not even realize you had in you. It's fun and productive.

Joyfully Submitted,
Cyndi Lacroix



Adult Bible Study

The Adult Bible Study consists of more than a dozen people who meet from 9:30-11 am on Monday mornings to read and discuss various books of the Bible. For 2018-2019, we are studying the book of Job and finding interesting parallels and challenges for our daily living. Questions raised by the group run from wondering how much of our views on caring for others should be shaped by the Bible and how much should be shaped by the



suffering of the individual in question, to where does our suffering begin: with us, with our ancestors or another place? In addition to the weekly Bible study, the groups likes to take tours including watching the play Jesus at Sight and Sound in Lancaster County, and touring the exhibit of paintings done by Kai Yokoyama's father on display at Drexel University. The sessions are always fun, entertaining and enlightening. Anyone is welcome to participate. No special Bible knowledge is needed.

Mission and Service Committee

Thanks to your generosity, the Mission and Service Committee continues to be able to provide support for the amazing work of local and worldwide missions. Our church leadership faithfully includes our work in the budget and your additional gifts of money and time have made it possible for us to reach out in times of great need.

- M&S held its second annual *Shred and Fed* event in April. Participants were encouraged to bring their documents to the church parking lot for shredding in exchange for donations of cash or non-perishable food items. Food and cash donations were shared among City Team, Philabundance, Garden City Food Ministry and Chester Eastside.
- WPC members and friends packed an additional 24,624 meals in two Rise Against Hunger events. This brings our grand total to over 1,000,000 meals since December of 2014!
- The 2018 Christ Market raised \$12,817, including the matching gift from Mission and Service, in support of 15 local and foreign projects.
- The congregation responded to the terrible suffering in the Carolinas and Florida by answering the Hurricane Relief Challenge which, with M&S matching, produced a total gift of \$16,855 for Presbyterian Disaster Assistance.
- The Breaking Bread program at Broad Street Ministry gives volunteers the opportunity for face-to-face interaction with the individuals who gather there for a meal. A small but growing contingent of WPC volunteers lend their hands there every other month.
- In the Fall, M&S partnered with the Sunday School and the congregation and collected over 100 coats that were delivered to CityTeam.
- Your contributions to WPC continue to support our missionaries in their varied and much-needed ministries around the world: John Stauffer and The America Team for Displaced Eritreans, Jeni Pedzinski and New Life Center Foundation, Charles Knuckles and City Team San Jose, and Presbyterian Mission workers Charles and Melissa Johnson in Africa and Barry and Shelley Dawson in Southeast Asia.

Committee Members during 2018: Jeni Albany, Laura Albany, Sallie Anderson, Roger Demos, Lise Meloy, Christi Moffatt, David Rudd, Gail Weaver and François Lacroix

Respectfully submitted,
Roger Demos



If you have come to help me, you are wasting your time.
If you have come because your liberation is bound up with mine, then let us work together.

*Lila Watson,
Aboriginal activist group
Queensland, Australia*

Peacemaking and Social Justice

Peacemaking and Social Justice works to engage the congregation in (social) justice issues that, at some level, affect all of us.

In addition to discussions of various topics, we also hosted the Memorial to the Lost (t-shirt) exhibit, conducted a gun violence panel aimed at kids in school, and helped organize a march in Swarthmore to create awareness of gun violence issues.



Gun violence, racism and immigration, the three current topics of discussion, all intersect when the conversation turns to power and money. Similarly, members of the congregation at times feel powerless when special interest groups seem to be able to influence legislation that is not favored by the general populace.



Fellowship of Friends



The Fellowship of Friends is a men's organization that meets on Wednesday mornings from 10 – 11AM. We meet for fellowship and to discuss selected books and current events, especially political events. Currently we are reading *Moral Man and Immoral Society: A Study in Ethics and Politics*.



Women of **W**allingford encourages all the women of our church to join in friendship and faith so that all may share in the joys, sorrows and emotions that are common to women of all ages.

Women of Wallingford

In February 2018 we spent a wonderful day at the IHM Center in Bryn Mawr. On a beautiful Saturday we passed the day sharing in fellowship as we found *Peace in the Pieces*. The “Downton-Abby-ish” home on the hill was a perfect setting for us to share in fellowship as we listed all those things which bring us peace. During our day we “pieced together” a quilt which will now hang in the church reception room. We returned this past weekend to share a SPA day (Spirits Playing Among us) where we acted out Bible stories to the great amusement of all.

We had a busy spring. We had our annual Palm Cross breakfast led by Dolores Thomas who once again taught us how to make the them –by the end of the day we turned out more than 400 crosses that were distributed to our congregation and area nursing homes for Palm Sunday celebrations. In May we held our now annual WOW pot-luck supper at the

home of Cyndi Lacroix and it was finally warm enough to sit outside and enjoy the garden.

Every month has brought new members to our WOW Circle meetings which are held the 2nd Wednesday of the month. This year Cyndi has blessed us with her spirit and introduced us to both the *Women of the Reformation* and the *Women of the Bible*. Her wonderful story telling skill has brought joy and laughter to our meetings.

Our Mission Projects included “Ditty Bags” for the residents of a care home in Upper Darby, and raising funds for school, health, and baby kits to be distributed to those in need throughout the world. We “blanketed the world in love” with our annual blanket drive in February and will do so again this year.

In December Cyndi welcomed 50 of us to her home as we celebrated Christmas with a pot-luck supper. It was truly a magical night as we read the Christmas story and sang Christmas carols in the soft light of the fireplace with a glow in our hearts.

We feel so blessed to be a part of this group of women of faith. With prayer we will continue God’s work and we hope to add programs that will attract and nurture all the women of the church.

Submitted with blessings,
Christine Dearnaley



As stewards of the church, Stewardship Council oversees its financial resources and the application of church funds towards purposes approved by the Session. The council has two subcommittees, Annual Giving and Capital Campaign. It also works closely with the Legacy Committee and the Financial Oversight Committee. 2018 was an active year for Stewardship.

STEWARDSHIP

The major areas of work include:

Completion of the Vision 250 Capital Campaign

Vision 250 concluded its two year campaign at the end of 2018. As of December 31, pledges (\$275,775) exceeded the campaign goal of \$250,000 by 10% and monies collected totaled \$275,993. The Trustees oversaw the completion of the parking lot resurface, new flooring, new LED lights and new energy efficient windows in the offices. The Narthex reconfiguration and upstairs bathroom refurbishment are to be completed in 2019. In addition, \$75,000 was contributed to the Legacy Fund. Thanks to the generosity of the congregation, the campaign has been a great success.

Reorganization of Reserve Funds Following up on the 2017 work to strengthen the MEND and Legacy funds, the council completed documentation describing the origin, purpose and governance of these two funds, as well as the Hayes Fund and the Landscaping Fund.

Successful Realization of the 2018 Budget 2018 came to a successful conclusion, even with a slight shortfall in offering income. Additional revenue generated through use of our facilities and careful expense management provided a modest surplus for 2019 needs. Thanks should be given to the many individuals, committees and boards that made this possible.

Analysis of the B Manse With the help of the Trustees, the council performed a financial analysis of the use of the B manse over the last 3 years. The council concluded that the B manse is well managed and has provided a reasonable rate of return during this time period. Council supported the Trustees recommendation to extend the current tenant lease for two more years.



Review of our 15-year History of Giving and Budgets Council reviewed our church's giving history and budgets over time. Membership and pledging have declined over this time period and annual giving has been relatively flat. Additional income from community use of our facilities has increased.

Church expenses have been prudently managed and have consistently conformed to the level of income we receive. The council reported that continuing to meet this challenge will become increasingly difficult without increases in annual giving.

Successful Annual Giving Campaign The council conducted a successful pledge campaign. Recognition of our church's budget history combined with a desire to fulfill congregational requests led the council to ask the congregation for a 10% increase in giving over the next two years. The campaign's results are reflected in the 2019 budget, which invests in several critical church activities.

Recommendation from the Financial Oversight Committee The committee reviewed the church's financial reserves and management

throughout 2018. It was determined that long-term investment returns for these funds could support a 4% allocation from each reserve fund. \$5,010 was approved to be distributed from Legacy for the purpose of hiring a Communications Coordinator responsible for increasing WPC's community exposure. Additional 2019 distributions were approved for MEND (\$9,710), Hayes (\$1,335) and Landscaping (\$450).

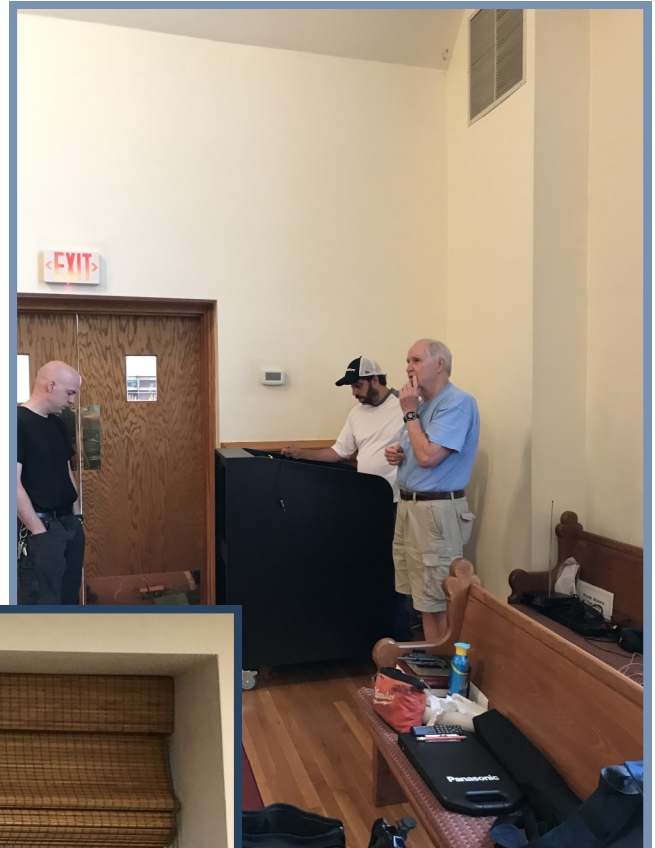
Stewardship accomplished a good deal in 2018 due to the efforts of many people. Special thanks are owed to our Treasurer, Andy Yost, our counters and bookkeeping staff. Without their effort and dedication, the council's work would not be possible.

Dave Shipman, Helen Picher, Leslie Krowchenco, Pat Tillson, Chris Dearnaley, Rick Miller, and Penny Sass

MEMORIAL COMMITTEE

The Memorial Committee has been active in making our experience at Wallingford better and worship more accessible. Early in 2018 the Memorial Funds were used to replace the public address system to one that is so much better. Currently we are working on refurbishing the Reception Room. You may have noticed that the blinds have already been replaced in the windows.

Committee members include: Judy Kenworthy, Jenny Miller, Marty Ashenfelter, Delores Thomas, Alva Hayes, François Lacroix and Roger Demos (Chair)



WPC BOARD OF TRUSTEES

The Board of Trustees is charged with the care, maintenance and improvement of the Church buildings, equipment and grounds, including both manses.

This includes building repairs, maintenance and upgrades, utilities, electronics, inside maintenance, grounds maintenance and oversight of building-related contracts and property and liability insurance policies. Annually, the Trustees develop a proposed budget for operation and maintenance expenses and monitor actual expenses against budget throughout the year.

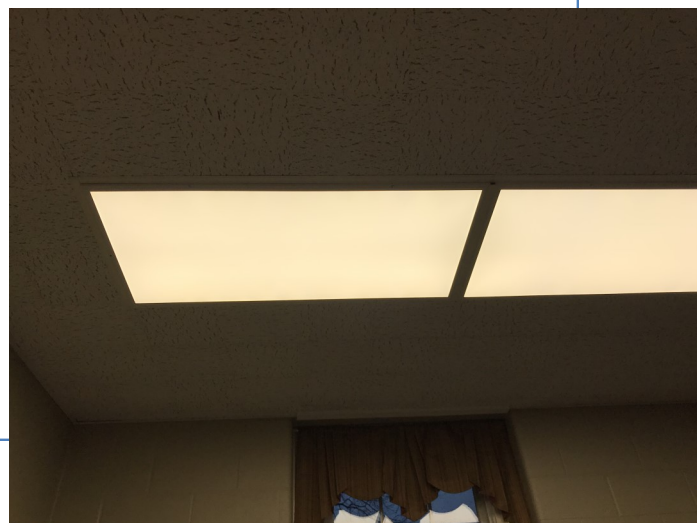
In addition to ongoing maintenance and repair of our properties, noteworthy accomplishments in 2018 included the installation of a new sound system in the sanctuary, upgraded security for the administrative building, tree removal and clearing of

brush, and planting two new trees behind the playground.

The board, with assistance from John Curtis, also managed the capital improvement projects approved as part of the Vision 250 Capital Campaign. In 2018, these included the roof replacement and water abatement project and the completion of the LED lighting project. The final Vision 250 projects, namely the installation of a new bathroom and the remodeling of the related space in the Narthex and the remodeling of the first floor hall bathrooms, began right after the first of the year and are expected to be completed in March.



Respectfully submitted,
Bob Gerlach, President



The Wallingford Cooperative Nursery School

Learning, laughter, giggles, and some tears continued to abound downstairs as The Wallingford Cooperative completed its 63rd year of operation.



There were almost no changes in the overall teaching staff for the 2017/2018 school year. The end of the 2016 school year brought about the retirement of Sue Colonna, but 2017-2018 saw Sue return as an aide in the Pre-K4 class. She just could not stay away! The rest of us knew it was pointless to try and leave (we really do enjoy working together) and so Julie Feinberg and Allison MacCallum taught the Pre-K4s, Stephanie Dykes and Jodi Dawes taught the Pre-Ks,

Emma Clausser-Schwartz and Sam Mirante guided the Play School group and MMO was wrangled by Betsy Schilero, Theresa Burch and Alison Schilero.

Financially, the 2017/2018 school year was a strong one. Enrollment was pretty much to capacity and as we had implemented a small tuition increase, while holding our expenses constant, we did see a surplus. The small surplus will allow us to implement some important security measures that, sadly, the world we live in demands.



As always, the Wallingford Cooperative Nursery School would like to thank everybody from the Wallingford Presbyterian Church who continues to support us in so many ways.

Georgie Perullo
Director
Wallingford Cooperative Nursery School



Wallingford After School Club TCDN

Trinity Cooperative Day Nursery (TCDN) has been operating the After School Club at the Wallingford Presbyterian Church (WASC) for 20 years! TCDN serves children in Kindergarten through 3rd grade. The after school program



operates from 3:00 p.m.-6:00p.m. daily. Our program also operates on schools ½ day and some school closing days. On school closing days children enrolled in our Nether Providence After School Club and Older After School Club may also attend the WASC.



This year WASC enrollment is approximately 35-40 children. Our staff includes Sue Gaul, Site Coordinator, Betty Fleming, Denise Loughery and Aidan Novack. They are a group of dedicated individuals who are excited to provide not only a warm and caring environment for the children but also to provide engaging and interactive activities to enhance the children's learning experiences.

There have been some changes at TCDN this year. Pat DeHaven, who was the Coordinator at WASC for many years, has taken on the role of Director for all of TCDN's After School Programs. You will still see Pat stopping by saying hello the children and parents along with making sure all is operating well and the children are having a wonderful time! TCDN

also has a new Executive Director, Theresa Snyder. Theresa brings with her a wealth of knowledge and experience in the areas of Early Childhood and School Age Care.

The Wallingford After School Club is nationally accredited by the Council on Accreditation which acknowledges that the program meets the highest standards for out of school time programs. WASC also maintains a STAR 4 rating from the Keystone Stars state's quality initiative.

TCDN would like to thank the members of Wallingford Presbyterian Church for all of their kindness and support during this transition year and we are looking forward to another 20 years!



TROOP 277 : REVIEW OF 2018

Camping Trips

- (7) 2-Night Weekend Camping Trips
- 6-Night Summer Camp at Resica Falls

Church Functions

- Shrove Tuesday Pancake Dinner
- Spaghetti Dinner
- Trunk or Treat
- Leaf/Clean Up Day
- Strawberry Festival



Away Meetings

- Joined Pack 320 at St. Edmond's Home for Children with Disabilities for a swim. We're the only Troop in the District that partakes in activities with Pack 320
- Pa Veterans Museum
- Strath Haven Pool
- Smedley Park
- SkyZone
- Arnold's Family Fun Center



Awards

- Won 2018 Journey To Excellence Gold Award
- First Place Marksman in Tri-County Camporee
- First Place Fire Building
- Third Place in Klondike Derby

Community Service

- Souper Bowl of Caring
- Rise Against Hunger
- Scouting for Food
- 6 ABC Thanksgiving Day Parade (We're the only Boy Scout Troop to make every Parade)

Eagle Scout Project

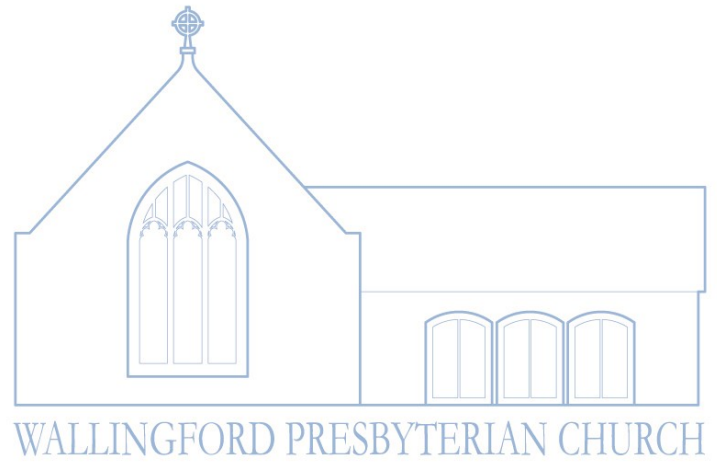
- Built raised planter beds for the ABC House in Swarthmore



Other Events:

- Attended the Valley Forge Wreath Ceremony
- Hiked 20 miles on the Schuylkill River Trail
- Biked the Chester Creek Trail
- Helped Pack 228 with their Pinewood Derby and Rocket Launch

**ANNUAL MEETING
OF THE CONGREGATION
Wallingford Presbyterian Church
Wallingford, Pennsylvania
28 January 2018**



Moderator the Reverend François Lacroix called the meeting to order and opened with prayer. He remarked on the fact that in 2017, we had changed the format of the meeting reports which rendered them more attractive and readable. He welcomed everyone and reminded the congregation that only members have the responsibility and privilege to vote. The Clerk certified that there was a quorum. There was no new business and the agenda was approved.

It was approved that we dispense with the reading of the minutes of the January 29, 2017 Annual Meeting of the Congregation. The minutes were approved.

Pastor François reviewed the year, with special mention of the 125th anniversary of the church, and showed a video showing our work, mission and ministry. He also thanked everyone for all they did for not only the anniversary celebration, but also for work done by board and committee members, teachers, ushers, counters, those who prepare coffee hour, et al.

Associate Pastor the Reverend Taylor Mills thanked everyone for the warm welcome she received when she came in September, and said she is very glad to be here.

Anyone who wished to could speak about their reports. Pat DeHaven, Site Coordinator for the Wallingford After School Club (operated by the Trinity Cooperative Day Nursery), made a few remarks. Jerry Rafter, Assistant Scoutmaster for Boy Scout Troop 277, thanked the church for being such a great host. Barbara Demos, Moderator of the Board of Deacons, thanked not only the Deacons but also the Deacons helpers.

Elder Helen Picher, Chair of the Nominating Committee, gave the report. The following members were nominated to serve on the Nominating Committee as Members at Large: Jeni Albany, Dottie Celebre, Rick Miller, Jenny Montague and Jerry Rafter with Wynne Edelman as First Alternate and Bob Kenworthy as Second Alternate. There were no nominations from the floor and the slate was approved. Helen thanked the outgoing committee members: Shirley Rudd, Kristine Mulhorn, Val McAdoo, Andrea Couzens, Brian George, Jr., Jim Oetinger and Mike Meloy.

The meeting of the Congregation was suspended so that the meeting of the corporation could be held.

Sallie Anderson, President of the Board of Trustees, opened the meeting. The Clerk certified that a quorum was present. There was no new business. Sallie noted that a number of projects, including some of those from the Vision 250 campaign, had come in under budget. She particularly thanked John Curtis for all of his help and Bob and Diane Gerlach for all of their work in the gardens.

Sallie reported that a financial review was completed and that our books are in order. The reports for the corporation were received.

Pastor François returned to the pulpit and reconvened the meeting of the Congregation. There was no new business

Treasurer Andy Yost gave his reports, the 2017 financial review and benevolence report. Andy noted that we came in well ahead of budget. There were no questions. Andy reviewed the 2018 budget which had been approved by Session. There were no questions. Andy remarked that this is the first time in many years that we have had a balanced budget.

As **Chair of Personnel Frank Noyes** came forward to give his report. Pastor François and Associate Pastor Taylor excused themselves from this part of the meeting. Frank reviewed the Pastoral Terms of Calls and noted that Pastor Taylor's call is set at the Presbytery minimum.

The Pastors returned to the meeting. The **reports of the Boards, Councils and organizations** were received.

There was a motion to adjourn the meeting which passed.

Pastor François offered the closing prayer and grace for the luncheon following. Associate Pastor Taylor gave the benediction.

Respectfully submitted,

Judith K. Kenworthy, Clerk



VISION 250

A Campaign for the Next 125 Years

As we close the official timeframe for the church's capital campaign (Vision 250), we have much to celebrate. From our final tally of \$275,775 in pledges, we have received \$275,993. We have seen the successful conclusion of four of the projects of the campaign: new energy efficient windows in the church offices, new hallway flooring that has been expanded to include church administrative space, repaving of the upper parking lot and entranceways, new markings for children's walkways and games they can play next to the larger playground and new LED lighting throughout the church which has already shown reduced energy costs. These projects represent \$110,000 of the campaign, and in each case, the original scope of these projects was able to be enlarged.

Excellent work by the Trustees has enabled more work to be done in these areas while at the same time coming in nearly 14% under the original budget! Additionally, \$75,000 has been contributed to the Legacy Fund, which can now support an expanded agenda for church activities in 2019. This includes the funding of a part-time Communications Coordinator this year to increase the church's community exposure.

Going forward, the Campaign has a cash balance of approximately \$100,000 to be applied to the remaining projects on our list: remodeling the Narthex and upgrading several of the upstairs bathrooms. Work on the Narthex is complete, and the bathroom upgrade has begun. Looking back on the past two years, we are extremely thankful to all who have contributed to the campaign as well as to the Trustees for their effective oversight and management of these projects.

Each of us on the Vision 250 committee gives thanks for the generosity and commitment our congregation has shown throughout the two years of the campaign. Ours is truly a giving church.

*Dave Shipman, David Rudd,
Ver Picher, Chris Dearnaley,
Bob Kenworthy.*



2018 Treasurer's Report

Income Statement

2018 had a breakeven budget, despite the substantial gap between expected giving and pledged income over the past several years. While giving fell \$5,400 short of budget, "Other Income" received from community rental of our facilities, investment income from reserves and a special music offering provided an additional \$60,000 for the year. These additional funds increased total income by \$4,800 over budget. 2018 expenses were \$9,000 under budget, largely due to not hiring a Youth Ministry Assistant and the related reduction in youth ministries' spending. Transitioning the office administrator position and church copier costs exceeded budget, but total 2018 expenses still came in lower overall. The combination of higher income and lower expenses provided a surplus of roughly \$12,000. This allowed us to avoid a December appeal again this year while still being able to fulfill budgeted expenses.

Balance Sheet

Year-end assets were down \$55,000 to \$886,000 while total equity increased by \$12,000. The major elements of the decline in assets were a \$41,000 decline in prepaid contributions, likely due to the change in the tax law, and a \$24,000 drop in the value of investments due to the equity market decline in 2018.

2019 Budget

The 2019 budget adopted by Session represents a significant investment in our church. First, our Personnel Committee has recommended a staff compensation increase of 2%, an improvement over the 1% increases of prior years. Second, with the Youth Ministry As-

sistant now hired, there is both additional salary expense as well as the anticipated costs of a full youth ministry budget. Third, an increase is planned for our Music and Worship activities. Transition to a new Music Director has led Session to plan for expanded resources in the form of musicians and soloists for what could potentially be a redesigned music program. Lastly, the 2019 budget calls for increases in snow removal costs, support for the Communications Coordinator and a known increase in our assessment from the Presbytery.

To cover these increased investments, Session is calling for the congregation to increase its giving to the church by 5% in 2019 as outlined in the Annual Giving campaign. This increased commitment could yield a small budget surplus of \$6,400, assuming expenses can be kept in line. Having a small cushion in the budget will provide financial support to take advantage of unexpected new opportunities for our church during the year as well as assist with unforeseen expenses. The 2019 budget supports our faith vision as described in our strategic plan and fulfills the requests of our boards, councils and committees. Not only does it show the potential for what our church can accomplish, it eliminates year-end appeals to the congregation, which have happened more than we would wish.

There are many members of our church who deserve thanks for their support. Special thanks belong to our Financial Secretary Michelle Hall, Kate Callahan, members of the Stewardship Council, the counters and the auditors for their dedication and support.

Final 2018 Annual Report - 2019 Budget

	<u>2018 Budget</u>	<u>2018 Actual</u>	<u>2019 Budget</u>
<u>Income</u>			
4010 · Pledge & plate offerings	\$450,000	\$444,592	\$472,500
<u>4100 · Rental Income</u>			
B Manse Rental Account - gross	22,000	26,400	26,400
WPC Rental Account	18,000	20,043	18,000
Total 4100 · Rental Income	40,000	46,443	44,400
<u>4200 · Investment Income</u>			
Vanguard Account Income		4,067	2,300
4200 · Investment Income - Other	1,300	634	1,300
Total 4200 · Investment Income	1,300	4,701	3,600
<u>4250 · Parking Income - gross</u>	8,100	6,209	8,100
<u>4300 · Misc. Income</u>			
Music		296	0
Vacation Bible Camp	200	168	200
4300 · Misc. Income - Other	200	441	200
Total 4300 · Misc. Income	400	906	400
Total Income	499,800	502,850	529,000
<u>Expense</u>			
<u>5000 · Ministry & Worship</u>			
5010 · Minister			
5011 · Salary	60,343	60,343	62,550
5016 · Benefits			
Presby Benefits	32,872	36,078	36,205
Dental			1,000
SECA	6,797	6,797	7,486
Total 5016 · Benefits	39,669	42,875	44,691
5018 · Prof Exp		-1,727	
5019 · Travel & Professional Expense	2,500	362	2,500
5020 · Study Leave	2,500	2,500	2,500
5023 · Honorarium for Guest Pastors	600	350	400
5625 · A Manse Electric/Gas	3,500	3,378	3,500
Total 5010 · Minister	109,112	108,081	116,141
5200 · Music			
5210 · Music Dir Compensation	45,638	45,683	46,551
5211 · Music Dir Benefits/Taxes	3,491	3,423	<u>3,561</u>
5212 · Continuing Ed/Organist	250	205	250
5215 · General Music Ministry	600	1,753	800
5216 · Substitute Organist	1,500	1,100	3,500
Staff Singer	0	0	5,000
5218 · Musicians/Soloists	2,800	2,700	4,000
Total 5200 · Music	54,279	54,864	63,662
5250 · Worship Council	1,900	2,421	1,200
Total 5000 · Ministry & Worship	165,291	165,366	181,003
<u>5300 · Education</u>			
5310 · Assoc Pastor			
5311 · Salary		32,404	35,483
5312 · Medical	19,900	21,341	19,974
Dental	500		500
SECA	4,011	4,012	4,130
5314 · Housing		20,000	18,000
5316 · Professional Expense	2,500	244	2,500
5319 · Continuing Education	1,000	533	1,000
5310 · Assoc Pastor - Other	52,434	0	0
Total 5310 · Assoc Pastor	79,845	78,534	81,587

5360 · Youth Exp			
5361 · Youth Intern	7,500	859	7,500
Total 5360 · Youth Exp	7,500	859	7,500
5363 · Children's Ministry Team	2,500	1,802	3,600
5364 · Youth Ministry Team	5,100	2,554	3,550
5365 · Adult Ministries Team	650	0	400
5371 · Vacation Bible Camp		285	300
5372 · Church Historian Expenses		147	200
Total 5300 · Education	95,595	84,181	97,137
5500 · Congregational Expenses			
5510 · Phila Presby Assessment	10,800	9,414	11,408
5515 · WPC Connections	3,500	2,951	3,500
Peacemaking & Social Justice			1,200
5540 · Stewardship Council		153	1,000
Total 5500 · Congregational Exp	14,300	12,517	17,108
5600 · Church Operation			
5610 · Staff			
5611 · Salaries	41,004	44,662	41,208
5612 · Existing Pension	1,970	1,970	1,970
5613 · Nursery Care	5,000	3,083	5,000
5614 · Sexton/Cleaning Svc	12,000	12,840	13,000
5615 · Accounting	8,160	8,187	8,351
5616 · Benefits/Taxes	5,000	6,572	2,400
Communications Coordinator			2,000
5618 · Clearance Checks	300	308	300
5619 · Prof Exp	100	273	300
5624 · Substitute Secretary	700	0	0
5629 · Continuing Ed Staff	500	300	300
Total 5610 · Staff	74,734	78,194	74,829
5620 · Fuel & Utilities			
5621 · Sewer/Water	4,200	4,258	4,350
5622 · Church Electric/Gas	13,000	13,175	13,400
5623 · Telephone	3,100	3,137	3,200
5626 · Sanctuary A/C	1,400	1,582	1,600
Total 5620 · Fuel & Utilities	21,700	22,151	22,550
5630 · Building Maint.			
5631 · Inside Maintenance	3,500	3,752	3,750
5632 · Outside Maintenance	16,200	17,081	17,000
5633 · Alarm contract	1,440	1,565	1,500
5634 · Trash Removal	660	668	700
5635 · Maintenance Supplies	2,000	1,032	1,500
5636 · Parking Lot Maintenance Ex-	2,500	2,500	2,500
Total 5630 · Building Maint.	26,300	26,598	26,950
5640 · Office Expense			
5641 · Supplies			
5641A · Subscriptions	500	104	500
5642 · Computer Exp	3,000	1,998	2,000
5641 · Supplies - Other	4,000	4,780	5,000
Total 5641 · Supplies	7,500	6,882	7,500
5643 · Postage	1,500	1,352	1,400
5644 · QuickBooks Expense	800	641	800
5645 · Equip Rental & Maint	9,500	8,583	8,600
5646 · PayPal & Brokerage Charg-	400	1,137	600
5647 · Copy Overage Fees		1,647	2,000
Total 5640 · Office Expense	19,700	20,241	20,900

5650 · Insurance	9,265	7,122	7,400
5660 · Real Estate Taxes			
5661 · A Manse Real Estate Taxes	7,500	7,445	7,630
5662 · B Manse Real Estate Taxes	6,436	6,395	6,555
Total 5660 · Real Estate Taxes	13,936	13,841	14,185
5670 · Misc.		0	
5671 · Congreg Mtgs/Recogs	400	440	450
<u>Total 5600 · Church Operation</u>	<u>166,035</u>	<u>168,588</u>	<u>167,264</u>
<u>Total 6000 · Benevolence</u>	<u>53,511</u>	<u>54,039</u>	<u>54,350</u>
<u>Total Expense</u>	<u>494,732</u>	<u>484,691</u>	<u>516,861</u>
<u>Net Ordinary Income</u>	<u>5,068</u>	<u>18,159</u>	<u>12,139</u>
<u>Other Expense</u>			
9510 · 106 B Manse Expense	4,400	4,400	4,400
9511 · 109 A Manse Maint. Expense	500	1,011	1,000
A Manse trash pickup		400	360
<u>Total Other Expense</u>	<u>4,900</u>	<u>5,811</u>	<u>5,760</u>
<u>Net Income</u>	<u>\$168</u>	<u>\$12,347</u>	<u>\$6,379</u>

Wallingford Presbyterian Church
Analysis of Changes 2018 Budget to 2019 Budget

2018 Actual versus 2018 Budget

Budgeted 2018 income	<u>\$168</u>
Pledge & Plate Offerings	(5,408)
Rental Income	6,443
Investment & other Income	2,014
Ministry & Worship	(75)
Associate Pastor	1,311
Youth ministry	10,102
Congregational expense	1,743
Church Operations - Staff Cost	(3,460)
Utilities	(451)
Maintenance	(298)
Office expense	(541)
Insurance + taxes	2,238
Other	(911)
Benevolence	(528)
<u>Net 2018 Income</u>	<u>\$12,347</u>

2019 Budget versus 2018 Actual

Actual 2018 Net Income	<u>\$12,347</u>
Pledge & Plate Offerings	27,908
Rent & Miscellaneous Income	(1,758)
Minister	(6,560)
Worship & Music	(9,077)
Associate Pastor	(3,053)
Youth ministry	(9,903)
Congregational expense	(4,600)
Church Operations - Staff Cost	3,366
Utilities & Maintenance	(700)
Office Expense	(659)
Insurance & Taxes	(622)
Benevolence	(311)
<u>Budgeted 2019 net income</u>	<u>\$6,379</u>

Wallingford Presbyterian Church
Balance Sheet
As of December 31, 2018

	<u>Dec 31, 18</u>
<u>ASSETS</u>	
<u>General Funds</u>	
1000 · Checking Account - TD Bank	\$98,773
1025 · Savings Account - TD Bank	59,424
1030 · Savings Acct (Escrow)- TD Bank	2,205
1050 · General Fund - Vanguard	258,700
- Receivable from Vanguard Funds	<u>2,824</u>
Total General Funds	<u>421,927</u>
<u>Restricted Funds</u>	
1054 · Legacy Fund	159,135
1055 · MEND Fund	235,963
1056 · Landscaping Fund	10,605
1065 · Hayes Fund	31,553
1075 · Emergency Fund	<u>27,216</u>
Total Restricted Funds	<u>464,472</u>
<u>TOTAL ASSETS</u>	\$886,399

LIABILITIES & EQUITY

Liabilities

2104 · Pastoral Gifts	-\$200
2107 · Library Fund	340
2110 · Legacy Fund Reserve	159,158
2160 · Prepaid Pledges	16,400
2163 · Prepaid Parking	600
2164 · Parking Lot Maintenance Reserve	10,303
2172 · Landscaping Fund Reserve	10,605
2174 · B Manse Maintenance	18,618
2176 · Congregational Meetings	-58
2180 · Memorial Fund	53,817
2181 · Kerestes Memorial Bible	1,846
2190 · MEND Fund Reserve	238,313
2191 · Hayes Fund Reserve	31,553
2192 · Emergency Fund Reserve	27,216
2220 · Flowers	-1,067
2223 · Wedding Exchange	341
2224 · Baptism Supplies	250
2225 · Funeral Exchange	2,868
2231 · Deacons Fund	4,213
2234 · Women's Initiatives	6,196
2237 · 125th Anniversary	-169
2239 · Electronic Sign Fund	250
2241 · Bereavement Group	-113
2246 · Strawberry Festival	1,850
2247 · Congregational Wellness Fund	234
2248 · Lectureship Fund	8,650
2250 · Youth Activities	846
2280 · Benevolence Restricted	29,375
2282 · Adult Mission Trips	50,646
2286 · Boiler and A/C Maintenance Fund	2,498
2287 · Pastor Travel and Study Leave	8,794
2289 · Associate Pastor Search Fund	17,339
2291 · 2017 Capital Campaign	99,776
2293 · Church Historian Reserve	275

Total Liabilities

\$801,564

<u>Equity</u>	
3000 · Opening Balance Equity	12,105
3900 · Retained Earnings	60,382
Net Income	<u>12,348</u>
<u>Total Equity</u>	<u>84,834</u>
<u>TOTAL LIABILITIES & EQUITY*</u>	<u>\$886,399</u>

* We also own a manse at 106 East Brookhaven Road which was purchased in 1999 for \$175,000.

Restricted Fund Income Budgets 2019

Legacy Fund Income Allocation

Carried over from prior years	\$2,612
2019 Allocation	<u>5,010</u>
Total	7,622

MEND Fund Income Allocation

Carried over from prior years	\$8,368
2019 Allocation	<u>9,710</u>
Total	18,078

Hayes Fund Income Allocation

Carried over from prior years	\$0
2019 Allocation	<u>1,335</u>
Total	1,335

Landscaping Fund Income Allocation

Carried over from prior years	\$129
2019 Allocation	<u>450</u>
Total	579

Wallingford Presbyterian Church Benevolence Report for 2018

<u>Balance at 12/31/2017</u>	<u>Amount</u>
Discretion of Mission & Service	\$ 36,139
Allocations payable	<u>9,930</u>
	<u>46,069</u>
<u>Allocations-in and 2018 Receipts</u>	
Allocation from income	54,039
Christ Market	7,985
Strawberry Festival - net	8,963
Designated Contributions	<u>24,394</u>
	95,381
<u>Mission & Service and other Allocations Paid Out</u>	
4 Paws for Ability	1,781
AFOS/DeNaaste Veraf	325

America Team for Displaced Eritreans	5,500
American Friends of NSWAS	17
Broad Street Ministry	3,000
CeaseFire PA	250
Charles and Melissa Johnson	1,200
Charles Knuckles - Missionary	2,000
Chester Children's Chorus	1,000
Chester Eastside Ministries	9,685
Christmas Joy	3,660
Church World Services	370
City Team International	2,000
Cityteam	2,204
Cradles to Crayons	210
CWS - Blanket Fund	1,675
Domestic Mission Trip	5,000
Deacons Fund	4,000
Delco United	100
Developments in Literacy	470
Dr. Barry and Shelley Dawson	1,200
Heeding God's Call	650
Heifer International	852
Hurricane Relief	5,350
International Mission Trip	5,000
Jeni Pedzinski	1,200
Johanna P. Williams	63
Kirkwood/Brainerd Camp - Scholarships	5,000
Lifeworks, Inc.	204
Medical Benevolence Foundation	357
Mercy Corps	220
Nether Providence Twp Fire Dept	150
New Life Center Foundation	390
One Great Hour of Sharing	5,271
Peace and Global Witness	385
Peacemaking & Social Justice	75
Philabundance	2,000
Plant With Purpose	213
Presbytery Disaster Assistance	7,213
Presbyterian Church (USA)	5,220
Presbyterian Historical Society	505
Rise Against Hunger	7,111
Sandy Hook Promise Foundation	100
Shred and Fed Event	525
SWIM	1,220
T. M. Thomas Memorial Presbyterian Church	1,000
Team Making a Change	5,400
The Alumni Group	<u>1,000</u>

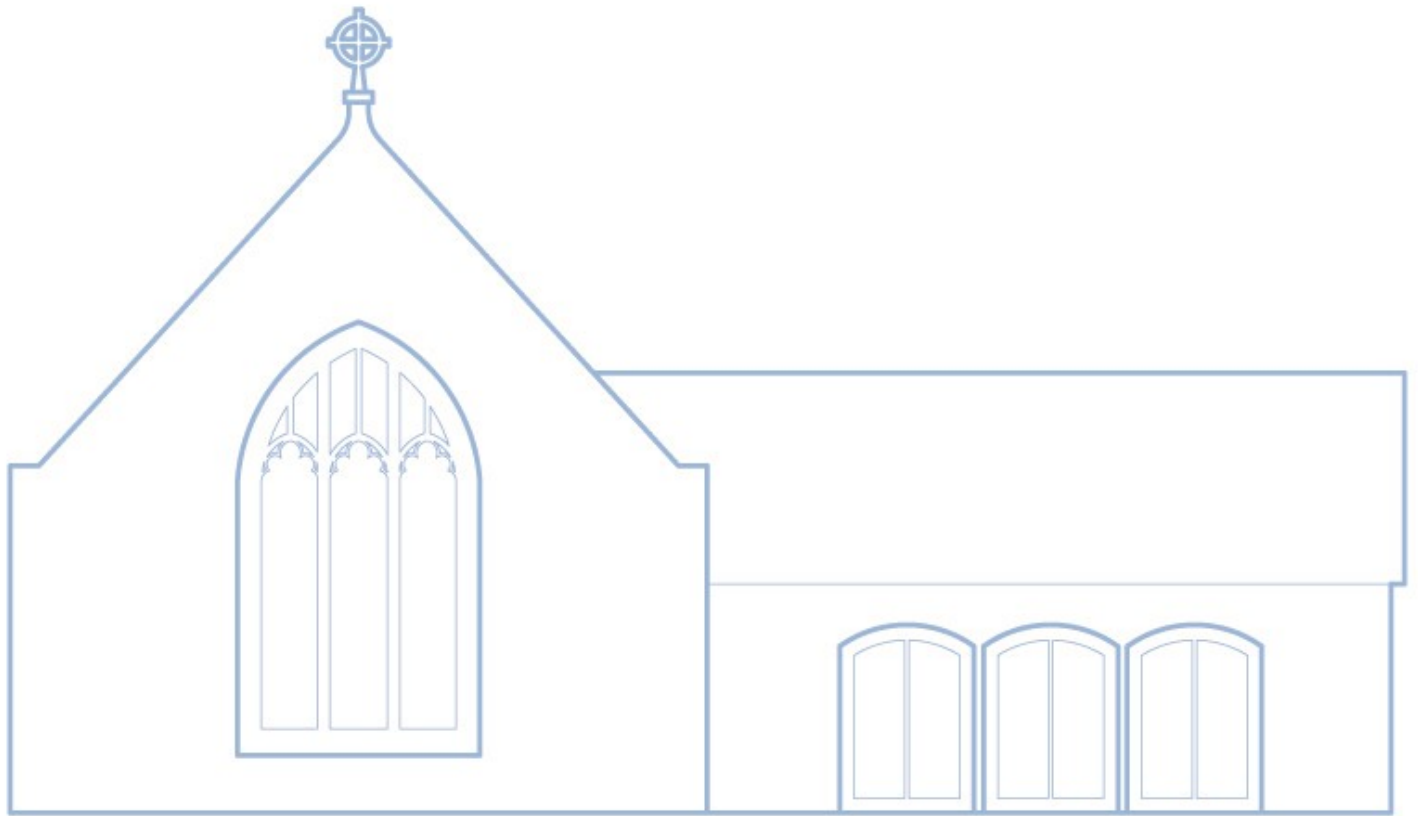
The Center for Pastoral Counseling	400
Various, Other	5,354
Website Development	2,824
Youth activities	636
Vest-A-Cop	540
	<u>112,075</u>

Balance at 12/31/2018

Discretion of Mission & Service	19,356
Allocations payable	10,019
	<u>\$ 29,375</u>

Wallingford Presbyterian Church - 2019 Budget Summary

<u>Income</u>	<u>2018 Actual</u>	<u>2019 Budget</u>	<u>Variation</u>
Pledge & Plate Offering	\$444,592	\$472,500	\$27,908
Other Income	58,258	56,500	(1,758)
Total Income	\$502,850	\$529,000	\$26,150
<u>Expenses</u>			
Minister	108,081	116,141	8,060
Music & Worship	57,285	64,862	7,577
Education	84,181	97,137	12,956
Congregation Expenses	12,517	17,108	4,591
Church Operations	168,588	167,263	(1,325)
Benevolence	54,039	54,350	311
Other	5,811	5,760	(51)
Total Expenses	\$490,502	\$522,621	32,119
Net Income	\$12,348	\$6,379	(\$5,969)



WALLINGFORD PRESBYTERIAN CHURCH

110 E Brookhaven Rd
Wallingford PA 19086

610-566-1644

wallingfordpres.org



Scan here to find us on Facebook, Instagram, and Twitter